



19 Highcroft

Milford Surrey GU8 5AZ

Asking Price: £215,000 Leasehold * (70/30 Shared Ownership)





- Entrance Hall With Useful Storage
- Sitting Room with Door Onto Patio & Communal Garden
- Fitted Kitchen With Appliances
- Double Bedroom Built In Wardrobes
- Shower Room
- Double Glazing & Gas Central Heating
- Residents Lounge/Conservatory & Laundry
- On Site Estate Manager
- Residents Parking
- Patio & Attractive Communal Gardens



An attractive one bedroom bungalow providing well planned accommodation forming part of this popular low level retirement development set in attractive communal gardens. Highcroft benefits from an Estate Manager on-site Mon - Fri mornings, a residents lounge/conservatory, laundry & guest suite. There is also ample residents parking. The property occupies a convenient location approximately 1/2 mile from the village centre with its excellent local shops and facilities, doctors and dentists, nearby bus routes and main line station. (* Price based on 70/30% shared equity)







Main Line Station – 1.1 miles (Waterloo approx. 55 mins)

Village Centre – 0.5 miles Godalming – 2.1 miles

Doctors – 0.5 miles Dentist – 0.7 miles

A3 – 1 mile M25 – 15.8 miles M3 – 15.3 miles

Council Tax Band – B Payable – £1927.23p (2025/26)

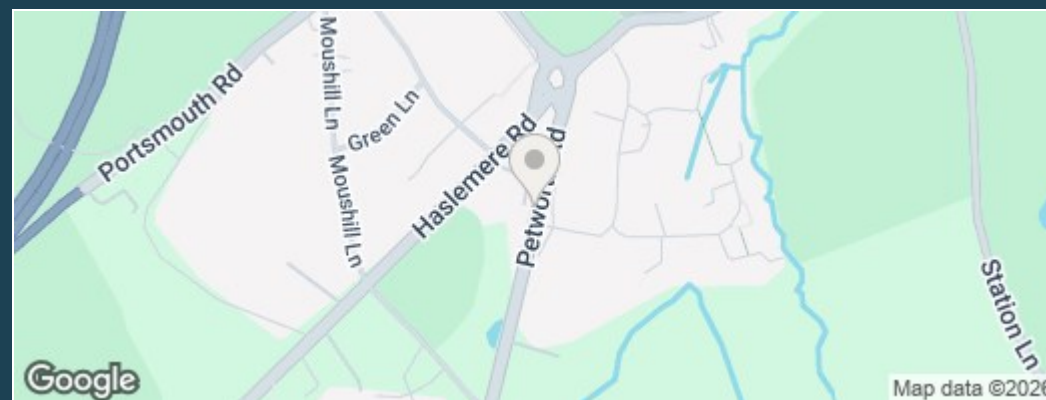
Leasehold – New 99 Years Ground Rent – Nil

Service Charge – £2738.33 EPC Rating – D

N.B. Please note that the owner of this property is a relative of one of the directors of Emery & Orchard.



Directions: Leave Godalming in a southerly direction on the A3100 taking the right hand exit at the roundabout by The Inn on the Lake and continuing on to Milford village. On reaching the village, at the first mini roundabout take the first turning left into Church Road. At the next round about take the first exit onto the A283 Petworth Road and Highcroft will then be seen after a short distance on the right hand side.



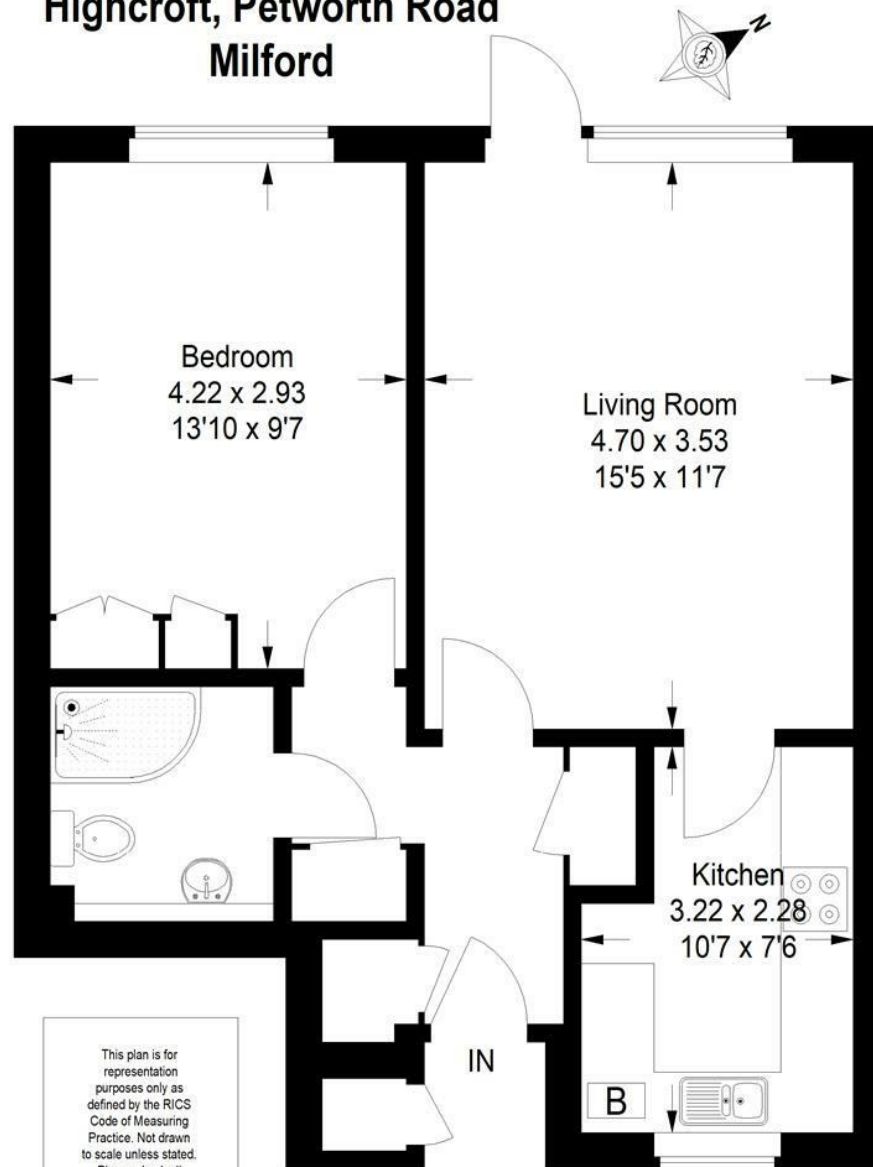


**Emery &
Orchard**
ESTATE AGENTS

01483 419 300

20 High Street
Godalming
Surrey
GU7 1EB

email:office@emery-orchard.co.uk



This plan is for
representation
purposes only as
defined by the RICS
Code of Measuring
Practice. Not drawn
to scale unless stated.
Please check all
dimensions before
making any decisions
reliant upon them.

Approximate Gross Internal Area :- 48 sq m / 517 sq ft

Note: These details are intended as a guide only and whilst believed to be correct are not guaranteed and they do not form part of any contract. We would inform prospective purchasers that we have not tested any equipment, appliances, fixtures, fittings or services. Any items not referred to in these particulars are excluded from the sale unless separately agreed. The distance to services & schools are approximate and given as a guide only. Prospective purchasers must check the admission policy for any school mentioned as these may vary.